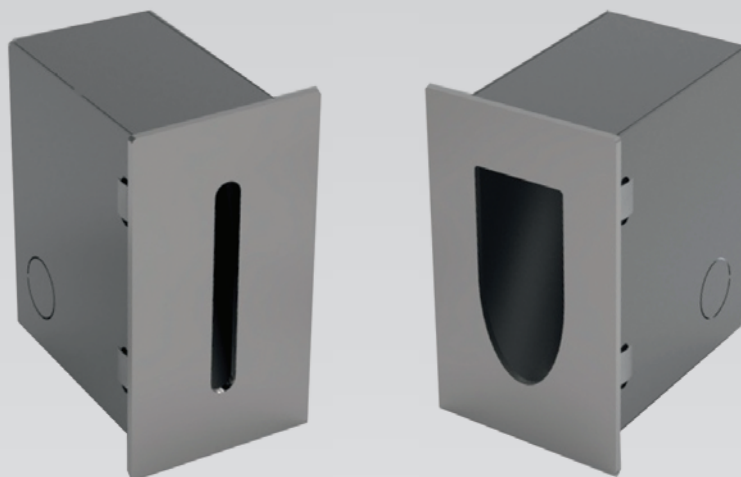


POLALUCE

ILLUMINAZIONE MODERNA

LIGHTING PRODUCTS CATALOG





Wall-Recessed

A recessed wall light is a small luminaire designed to be installed surface mounted. Its high-quality raw material ensures high resistance to dust, humidity and water. High efficiency LED lights provide more luminous and brighter with low consumptions. The louvers extending across its opening prevent the glare effect, delivering a more uniform, comfortable and pleasant lighting experience. This product has features as easy installation and low maintenance requirements. It enhances overall brightness and creates mood lighting. It is suitable for application as public, residential or pedestrian areas, Stairs, parks, gardens and shopping malls.

HOUSING: Die Cast Aluminum in choice of RAL Coloured Powder Coated

DIFFUSER: Polycarbonate Optical Lens

LED: Reducy Energy Consumption with L80/B10/F10

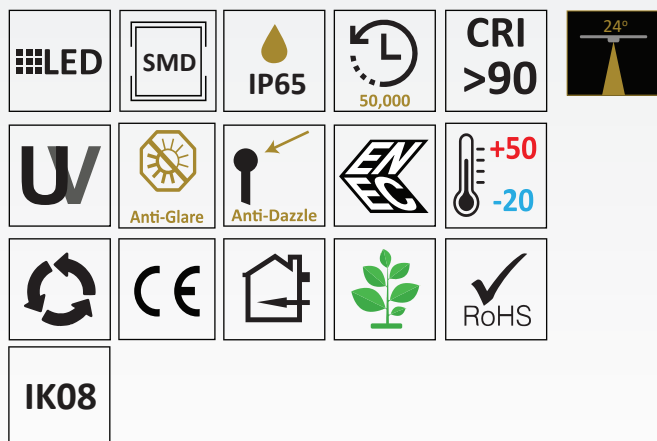
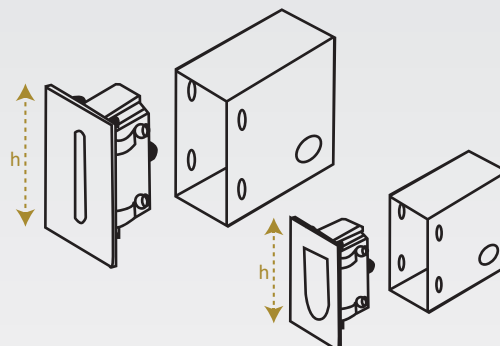
AVERAGE LIFE:50,000 hrs Lifetime Working Under Temp (-20°C - 50°C)

Technical Specifications

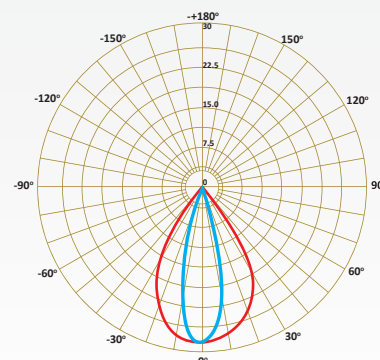
Item Code	Power	Lumen	Dimension	Hole
PLA403003	3W	360lm	43x70x80h	70x34
PLA404003	3W	360lm	43x70x80h	70x34

Finish ☐ White
☐ Grey
☒ Black

Technical Drawings



2700K
3000K
4000K
5000K
6000K
6500K



A++

85~265V
50/60HZ

WALL RECESSED LIGHTS

LED DRIVER: TRIDONIC, PHILIPS, SHARP, LED CHIP: PHILIPS, CREE, OSRAM, GTI, BRIDGELUX, SAMSUNG, CITIZEN

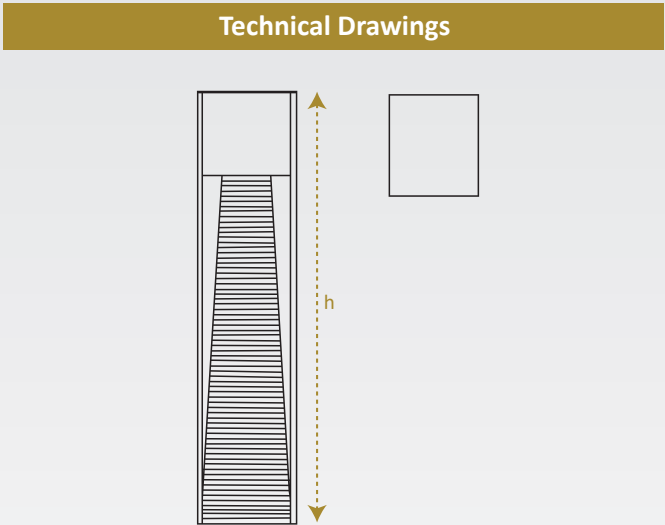


Wall-Recessed

A recessed wall light is a small luminaire designed to be installed surface mounted. Its high-quality raw material ensures high resistance to dust, humidity and water. High efficiency LED lights provide more luminous and brighter with low consumptions. The louvers extending across its opening prevent the glare effect, delivering a more uniform, comfortable and pleasant lighting experience. This product has features as easy installation and low maintenance requirements. It enhances overall brightness and creates mood lighting. It is suitable for application as public, residential or pedestrian areas, Stairs, parks, gardens and shopping malls.

- HOUSING:** Die Cast Aluminum in choice of RAL Coloured Powder Coated
- DIFFUSER:** Polycarbonate Optical Lens
- LED:** Reducy Energy Consumption with L80/B10/F10
- AVERAGE LIFE:**50,000 hrs Lifetime Working Under Temp (-20°C - 50°C)

Technical Specifications				
Item Code	Power	Lumen	Dimension	Hole
PLA405005	5W	450lm	80x90x200h	80x200
PLA405008	8W	720lm	80x90x200h	80x200
PLA406005	5W	450lm	80x90x600h	80x600
PLA406008	8W	720lm	80x90x600h	80x600



LED

SMD

IP65

50,000

CRI >90

24°

W

Anti-Glare

Anti-Dazzle

EV

+50
-20

Recycling

CE

RoHS

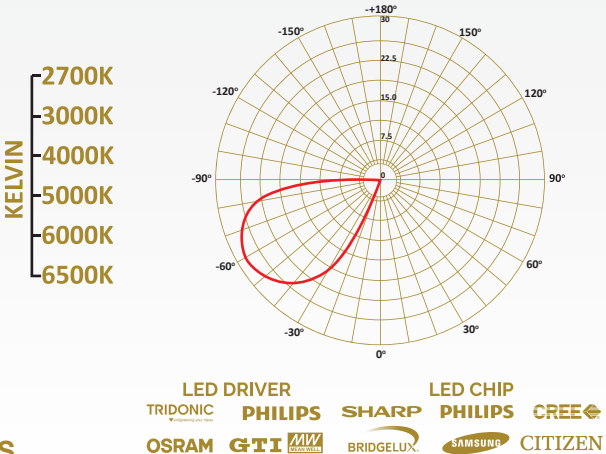
Green Leaf

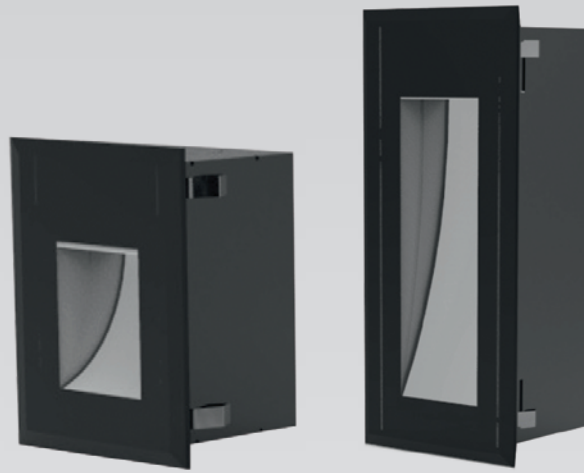
RoHS

IK08

A++

85~265V
50/60HZ





Wall-Recessed

A recessed wall light is a small luminaire designed to be installed surface mounted. Its high-quality raw material ensures high resistance to dust, humidity and water. High efficiency LED lights provide more luminous and brighter with low consumptions. The louvers extending across its opening prevent the glare effect, delivering a more uniform, comfortable and pleasant lighting experience. This product has features as easy installation and low maintenance requirements. It enhances overall brightness and creates mood lighting. It is suitable for application as public, residential or pedestrian areas, Stairs, parks, gardens and shopping malls.

HOUSING: Die Cast Aluminum in choice of RAL Coloured Powder Coated

DIFFUSER: Polycarbonate Optical Lens

LED: Reducy Energy Consumption with L80/B10/F10

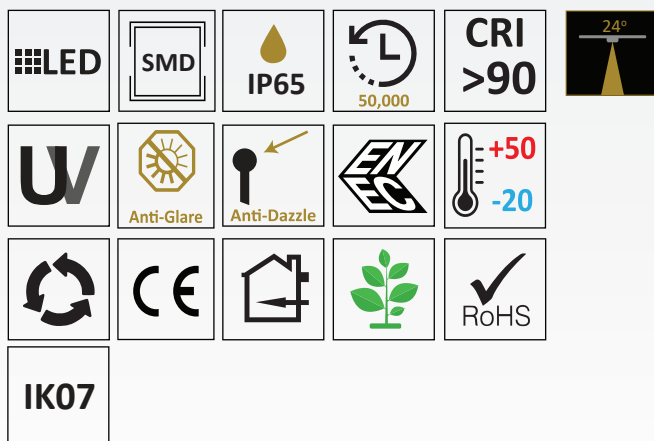
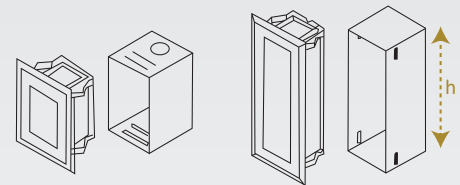
AVERAGE LIFE:50,000 hrs Lifetime Working Under Temp (-20°C - 50°C)

Technical Specifications

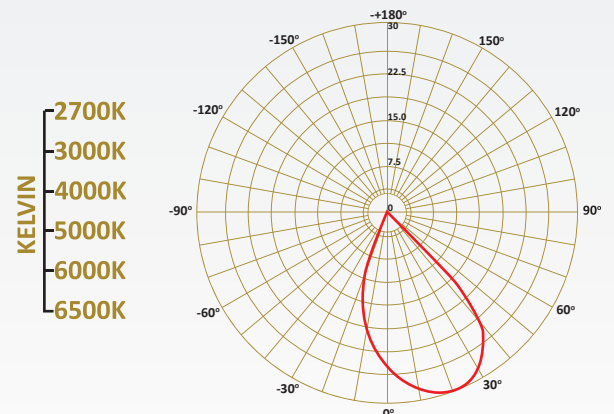
Item Code	Power	Lumen	Dimension	Hole
PLC401003	3W	360lm	81x52x105h	98x62
PLC402004	4W	480lm	85x54x200h	174x62

Finish ☐ White
☐ Grey
☒ Black

Technical Drawings



85~265V
50/60HZ





Wall-Recessed

A recessed wall light is a small luminaire designed to be installed surface mounted. Its high-quality raw material ensures high resistance to dust, humidity and water. High efficiency LED lights provide more luminous and brighter with low consumptions. This product has features as easy installation and low maintenance requirements. It enhances overall brightness and creates mood lighting. It is suitable for application as public, residential or pedestrian areas, parks, gardens and shopping malls.

HOUSING: Die Cast Aluminum in choice of RAL Coloured Powder Coated

DIFFUSER: Polycarbonate Optical Lens

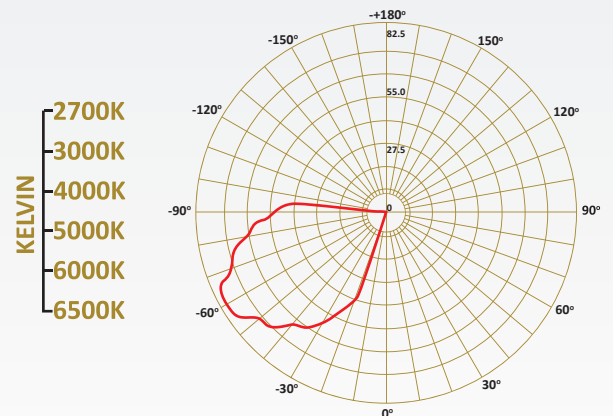
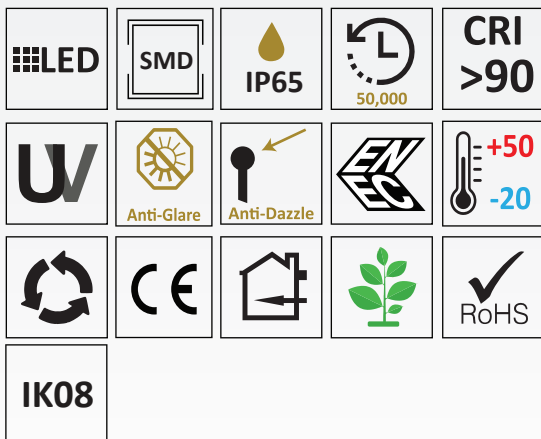
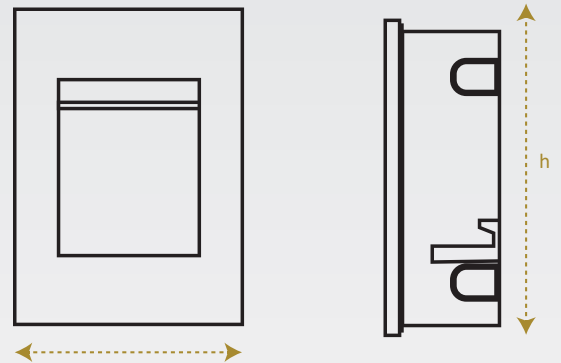
LED: Reducy Energy Consumption with L80/B10/F10

AVERAGE LIFE:50,000 hrs Lifetime Working Under Temp (-20°C - 50°C)

Technical Specifications

Item Code	Power	Lumen	Dimension	Hole
PLL407010	10W	1200lm	130x65x180h	124x174

Technical Drawings



85~265V
50/60HZ

WALL RECESSED LIGHTS

LED DRIVER: TRIDONIC, PHILIPS, SHARP, LED CHIP: PHILIPS, CREE, OSRAM, GTI, BRIDGELUX, SAMSUNG, CITIZEN



Wall-Recessed

A recessed wall light is a small luminaire designed to be installed surface mounted. Its high-quality raw material ensures high resistance to dust, humidity and water. High efficiency LED lights provide more luminous and brighter with low consumptions. This product has features as easy installation and low maintenance requirements. It enhances overall brightness and creates mood lighting. It is suitable for application as public, residential or pedestrian areas, parks, gardens and shopping malls.

HOUSING: Die Cast Aluminum in choice of RAL Coloured Powder Coated

DIFFUSER: Polycarbonate Optical Lens

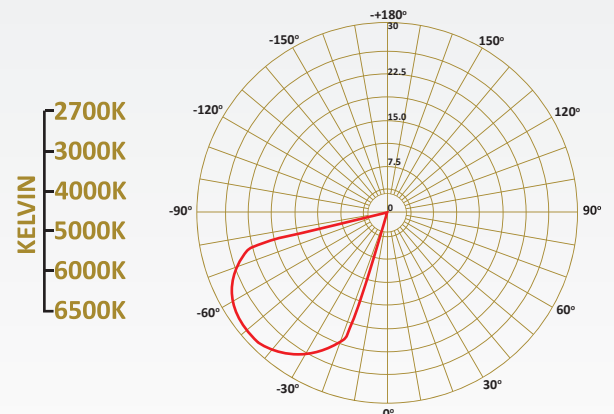
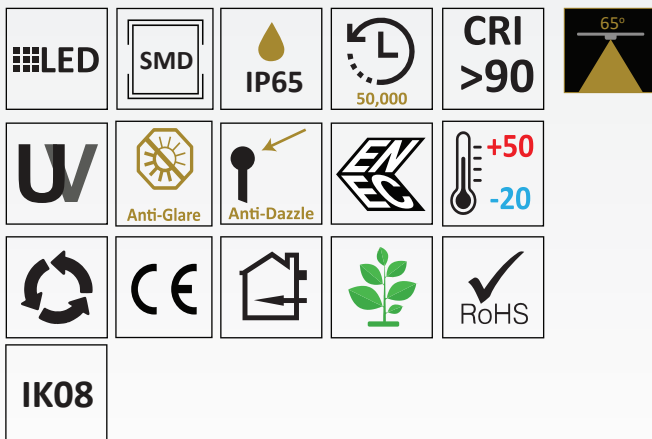
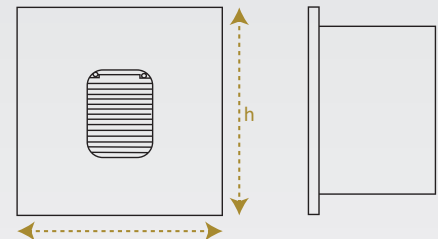
LED: Reducy Energy Consumption with L80/B10/F10

AVERAGE LIFE:50,000 hrs Lifetime Working Under Temp (-20°C - 50°C)

Technical Specifications

Item Code	Power	Lumen	Dimension	Hole
PLM409003	3W	360lm	80x48x80h	74x74

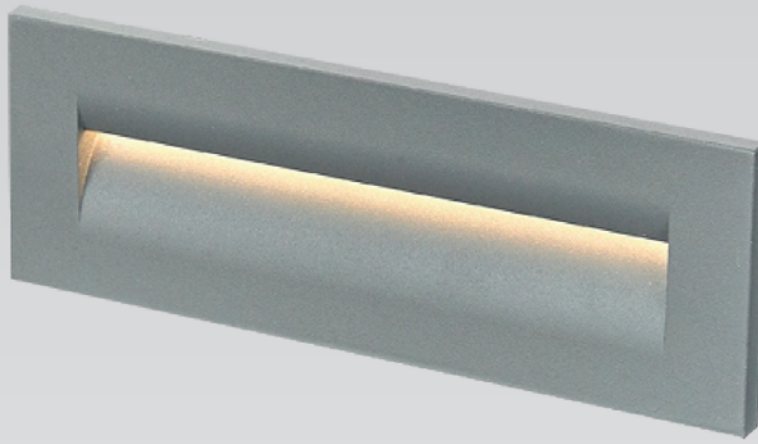
Technical Drawings



85~265V
50/60HZ

WALL RECESSED LIGHTS

LED DRIVER: TRIDONIC, PHILIPS, SHARP, LED CHIP: PHILIPS, CREE, OSRAM, GTI, BRIDGELUX, SAMSUNG, CITIZEN



Wall-Recessed

A recessed wall light is a small luminaire designed to be installed surface mounted. Its high-quality raw material ensures high resistance to dust, humidity and water. High efficiency LED lights provide more luminous and brighter with low consumptions. This product has features as easy installation and low maintenance requirements. It enhances overall brightness and creates mood lighting. It is suitable for application as public, residential or pedestrian areas, parks, gardens and shopping malls.

HOUSING: Die Cast Aluminum in choice of RAL Coloured Powder Coated

DIFFUSER: Polycarbonate Optical Lens

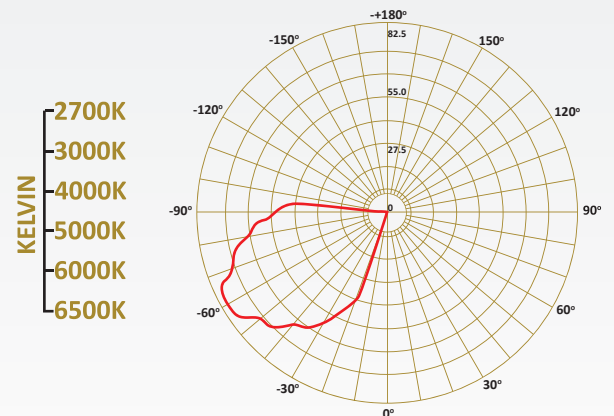
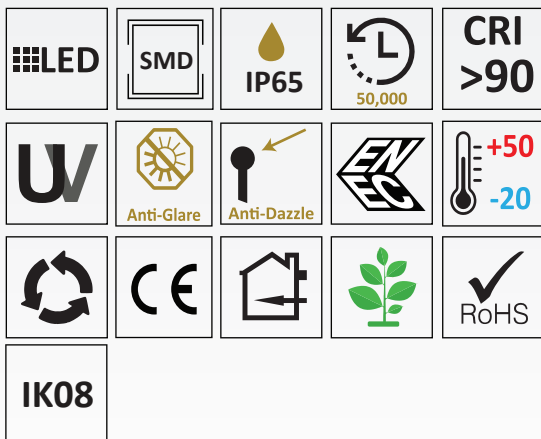
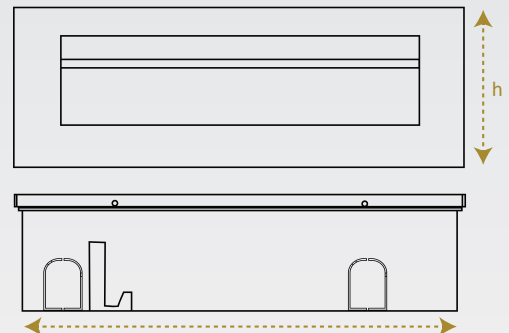
LED: Reducy Energy Consumption with L80/B10/F10

AVERAGE LIFE:50,000 hrs Lifetime Working Under Temp (-20°C - 50°C)

Technical Specifications

Item Code	Power	Lumen	Dimension	Hole
PLN408010	10W	1200lm	248x65x89h	83x242

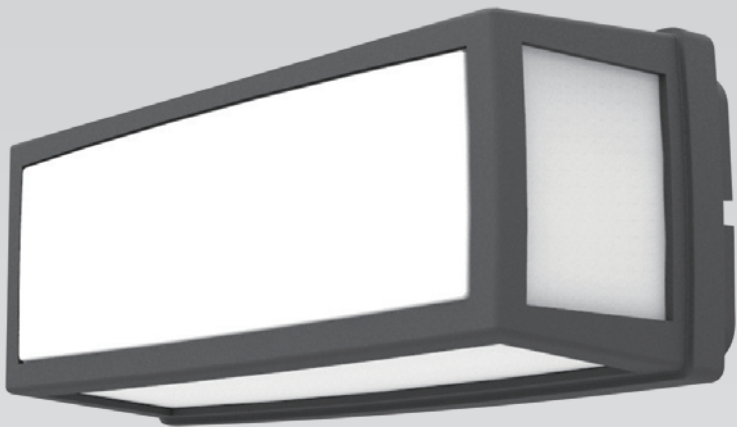
Technical Drawings



85~265V
50/60HZ

WALL RECESSED LIGHTS

LED DRIVER: TRIDONIC, PHILIPS, SHARP, LED CHIP: PHILIPS, CREE, OSRAM, GTI, BRIDGELUX, SAMSUNG, CITIZEN

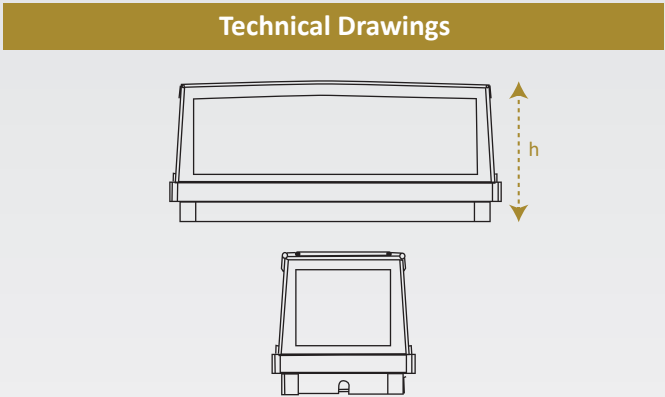


Wall-Surface

A wall surface light is used to be fixed on the wall. It is designed to deliver both functional and ambient lighting. Wall-mounted range of LED products can be used to replace traditional wall-mounted luminaires incorporating compact fluorescent lamps. They can be adjusted in different directions and provide versatility in lighting design. It enhances overall room brightness and creates mood lighting. It Can be installed vertically or horizontally giving you convenient control of your lighting environment. It is suitable for application as public, residential or pedestrian areas, parks, gardens and shopping malls.

- HOUSING:** Die Cast Aluminum in choice of RAL Colours Powder Coated
- DIFFUSER:** Double Polycarbonate PMMA Diffuser specially for LED
- LED:** Reducy Energy Consumption with L80/B10/F10
- AVERAGE LIFE:**50,000 hrs Lifetime Working Under Temp (-20°C - 50°C)

Technical Specifications			
Item Code	Power	Lumen	Dimension
PLA207006	6W	720lm	260x112x112h
PLA208012	12W	1440lm	385x117x130h



LED

SMD

IP65

50,000

CRI >90

160°

W

Anti-Glare

Anti-Dazzle

EN

+50
-20

Recycle

CE

RoHS

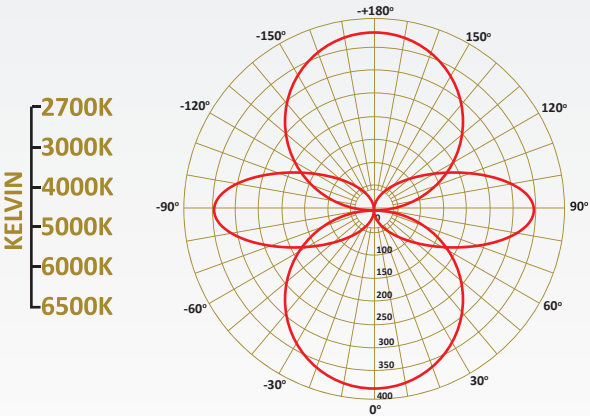
IK06

Light Pollution Control

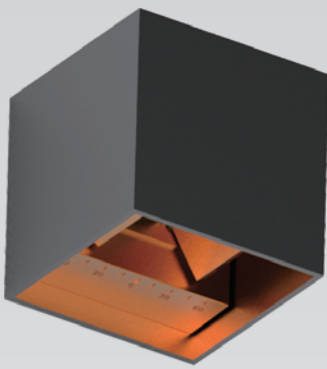
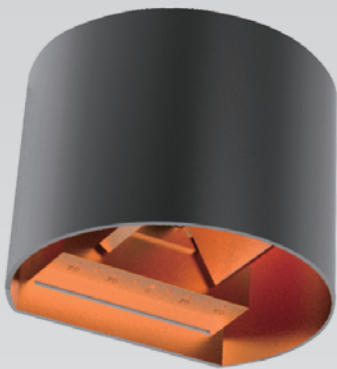


85~265V
50/60HZ

WALL SURFACE LIGHTS



- LED DRIVER
TRIDONIC
OSRAM
- PHILIPS
GTI
- SHARP
BRIDGELUX
- LED CHIP
PHILIPS
SAMSUNG
- CREE
CITIZEN



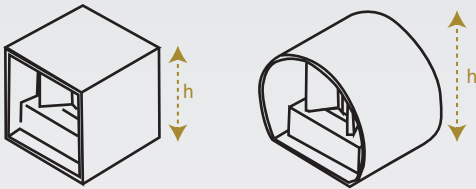
Wall-Surface

A wall surface light is used to be fixed on the wall. It is designed to deliver both functional and ambient lighting. Wall-mounted range of LED products can be used to replace traditional wall-mounted luminaires incorporating compact fluorescent lamps. They can be adjusted in different directions and provide versatility in lighting design. It enhances overall room brightness and creates mood lighting. It Can be installed vertically or horizontally giving you convenient control of your lighting environment. It is suitable for application as public, residential or pedestrian areas, parks, gardens and shopping malls.

- HOUSING: Die Cast Aluminum in choice of RAL Colours Powder Coated
- DIFFUSER: Double Polycarbonate PMMA Diffuser specially for LED
- LED: Reducy Energy Consumption with L80/B10/F10
- AVERAGE LIFE:50,000 hrs Lifetime Working Under Temp (-20°C - 50°C)

Technical Specifications			
Item Code	Power	Lumen	Dimension
PLF211007	7.2W	660lm	100x100x101h
PLF212007	7.2W	660lm	136x100x115h

Technical Drawings



LED

SMD

IP65

50,000

CRI >90

U

Anti-Glare

Anti-Dazzle

EN

+50
-20

Recycling

CE

RoHS

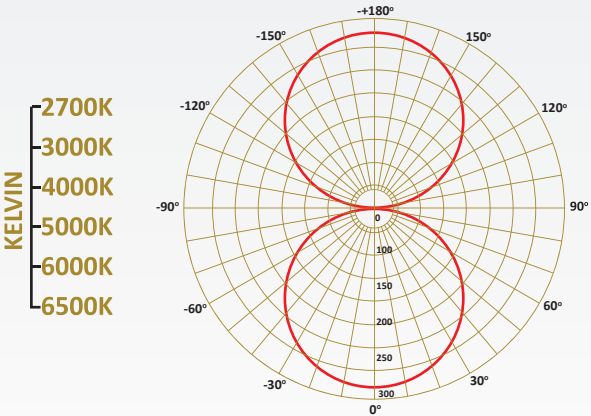
Light Pollution Control

IK06



85~265V
50/60HZ

WALL SURFACE LIGHTS



- LED DRIVER
TRIDONIC
OSRAM
- PHILIPS
GTI
- SHARP
BRIDGELUX
- LED CHIP
PHILIPS
SAMSUNG
- CREE
CITIZEN



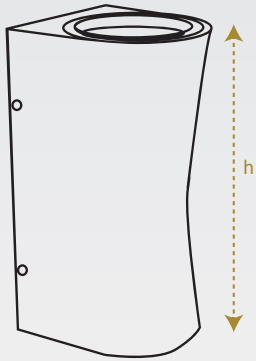
Wall-Surface

A wall surface light is used to be fixed on the wall. It is designed to deliver both functional and ambient lighting. Its compact cylindrical body made by die cast aluminum houses a recessed integrated LED source, preventing glare and hotspot issue once lit. They can be adjusted in different directions and provide versatility in lighting design. It enhances overall room brightness and creates mood lighting. It Can be installed vertically or horizontally giving you convenient control of your lighting environment. It is suitable for application as public, residential or pedestrian areas, parks, gardens and shopping malls.

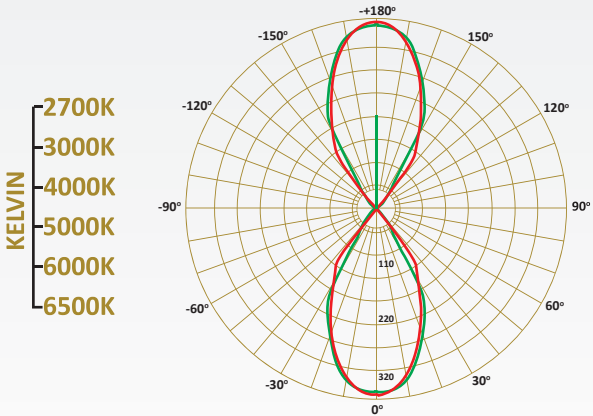
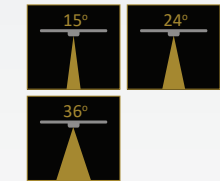
- HOUSING:** Die Cast Aluminum in choice of RAL Colours Powder Coated
- DIFFUSER:** Transparent Tempered Glass Diffuser
- REFLECTOR:** Anodized Aluminum
- LED:** Reducy Energy Consumption with L80/B10/F10
- AVERAGE LIFE:**50,000 hrs Lifetime Working Under Temp (-20°C - 50°C)

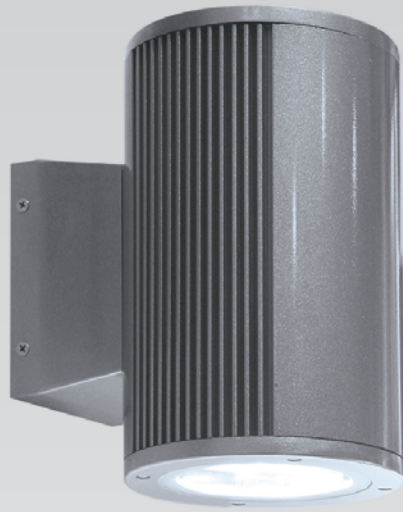
Technical Specifications			
Item Code	Power	Lumen	Dimension
PLF216012	2x6W	1440lm	104x105x200h
PLF216016	2x8W	1920lm	104x105x200h
PLF216020	2x10W	2400lm	104x105x200h

Technical Drawings



85~265V
50/60HZ





Wall-Surface

A wall surface light is used to be fixed on the wall. It is designed to deliver both functional and ambient lighting. Its compact cylindrical body made by die cast aluminum houses a recessed integrated LED source, preventing glare and hotspot issue once lit. They can be adjusted in different directions and provide versatility in lighting design. It enhances overall room brightness and creates mood lighting. It Can be installed vertically or horizontally giving you convenient control of your lighting environment. It is suitable for application as public, residential or pedestrian areas, parks, gardens and shopping malls.

HOUSING: Die Cast Aluminum in choice of RAL Colours Powder Coated

DIFFUSER: Transparent Tempered Glass Diffuser

REFLECTOR: Anodized Aluminum

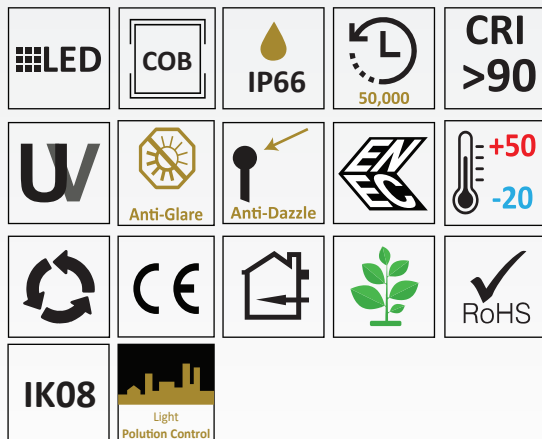
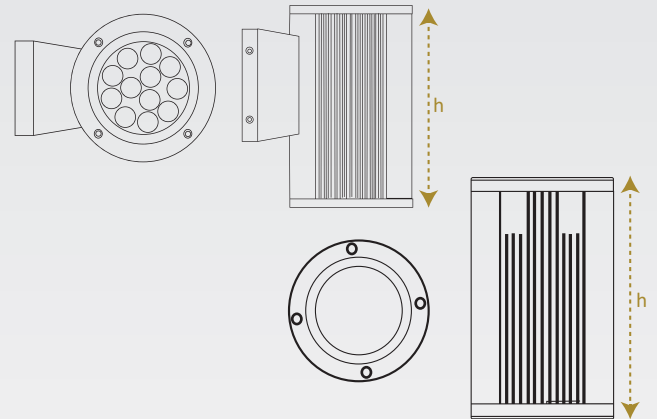
LED: Reducy Energy Consumption with L80/B10/F10

AVERAGE LIFE:50,000 hrs Lifetime Working Under Temp (-20°C - 50°C)

Technical Specifications

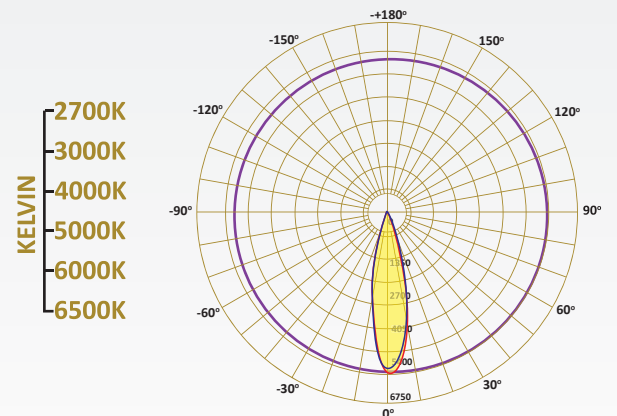
Item Code	Power	Light Emission	Lumen	Dimension
PLM201060	60W	Double	7200lm	Ø155(215)x350h
PLM201036	36W	Double	4320lm	Ø155(215)x350h
PLM201021	21W	Double	2520lm	Ø155(215)x350h
PLM203016	16W	Double	1920lm	Ø100(150)x350h
PLM203008	8W	Double	960lm	Ø100(150)x170h
PLM204020	20W	Double	2400lm	Ø155(215)x350h
PLM202016	16W	Single	1920lm	Ø155(215)x350h
PLM202011	11W	Single	1320lm	Ø155(215)x350h
PLM202026	26W	Single	3120lm	Ø155(215)x350h
PLM204003	3.5W	Single	420lm	Ø100(150)x170h
PLM204010	10W	Single	1200lm	Ø100(150)x170h

Technical Drawings

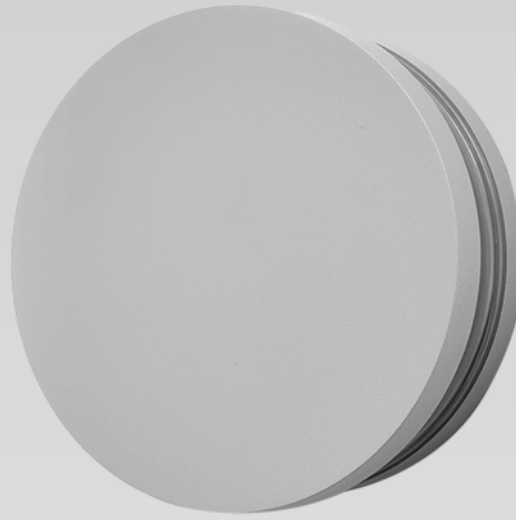


85~265V
50/60HZ

WALL SURFACE LIGHTS



LED DRIVER: TRIDONIC, PHILIPS, SHARP, LED CHIP: PHILIPS, CREE, OSRAM, GTI, BRIDGELUX, SAMSUNG, CITIZEN



Wall-Surface

A wall surface light is used to be fixed on the wall. It is designed to deliver both functional and ambient lighting. It has a modern design and can be used to highlight specific areas or artwork. Advanced technology and Luxurious materials ensure a long lifespan and low energy consumption. They can be adjusted in different directions and provide versatility in lighting design. This light design is thought to provide a 360 degrees light effect with a really cool look. It enhances overall room brightness and creates mood lighting. These fixtures can be found in various styles, from minimalist and modern styles to more fancy and decorative designs.

HOUSING: Die Cast Aluminum in choice of RAL Colours Powder Coated

DIFFUSER: Polycarbonate Diffuser Lens for LED 360° Reflection

REFLECTOR: Anodized Aluminum

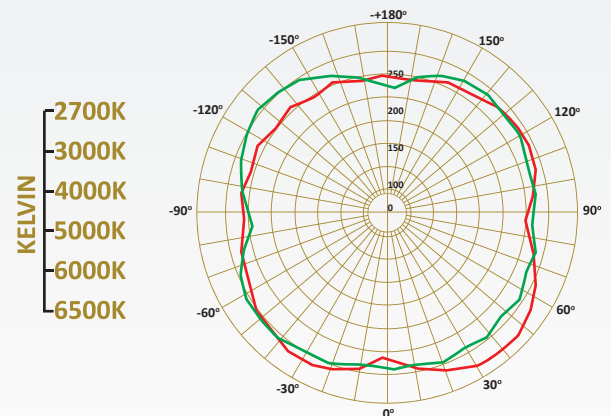
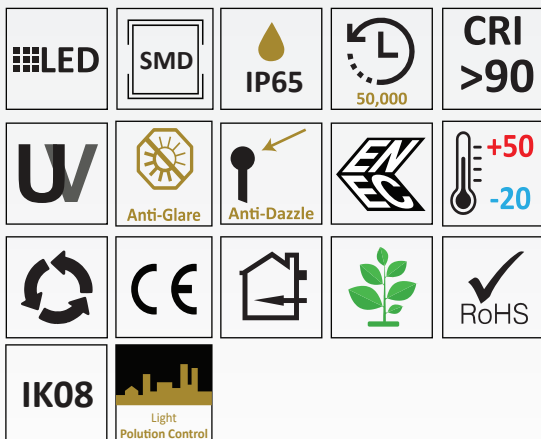
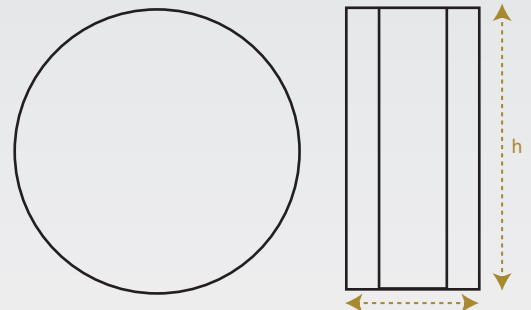
LED: Reduce Energy Consumption with L80/B10/F10

AVERAGE LIFE: 50,000 hrs Lifetime Working Under Temp (-20°C - 50°C)

Technical Specifications

Item Code	Power	Lumen	Dimension
PLM209006	6W	660lm	Ø150x50h

Technical Drawings



85~265V
50/60HZ

WALL SURFACE LIGHTS

LED DRIVER: TRIDONIC, PHILIPS, SHARP, LED CHIP: PHILIPS, CREE, OSRAM, GTI, BRIDGELUX, SAMSUNG, CITIZEN



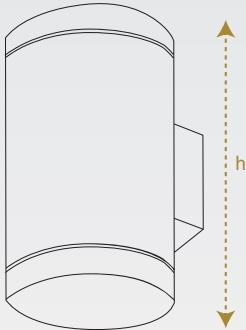
Wall-Surface

A wall surface light is used to be fixed on the wall. It is designed to deliver both functional and ambient lighting. Its compact cylindrical body made by die cast aluminum houses a recessed integrated LED source, preventing glare and hotspot issue once lit. They can be adjusted in different directions and provide versatility in lighting design. It enhances overall room brightness and creates mood lighting. It Can be installed vertically or horizontally giving you convenient control of your lighting environment. It is suitable for application as public, residential or pedestrian areas, parks, gardens and shopping malls.

- HOUSING:** Die Cast Aluminum in choice of RAL Colours Powder Coated
- DIFFUSER:** Transparent Tempered Glass Diffuser
- REFLECTOR:** Anodized Aluminum
- LED:** Reducy Energy Consumption with L80/B10/F10
- AVERAGE LIFE:**50,000 hrs Lifetime Working Under Temp (-20°C - 50°C)

Technical Specifications			
Item Code	Power	Lumen	Dimension
PLO217011	1x11W	1265lm	Ø110x200h
PLO217022	2x11W	2530lm	Ø110x200h
PLO218011	1x11W	1265lm	100x100x200h
PLO218022	2x11W	2530lm	100x100x200h

Technical Drawings



LED

COB

IP66

50,000

CRI >90

W

Anti-Glare

Anti-Dazzle

EN

+50
-20

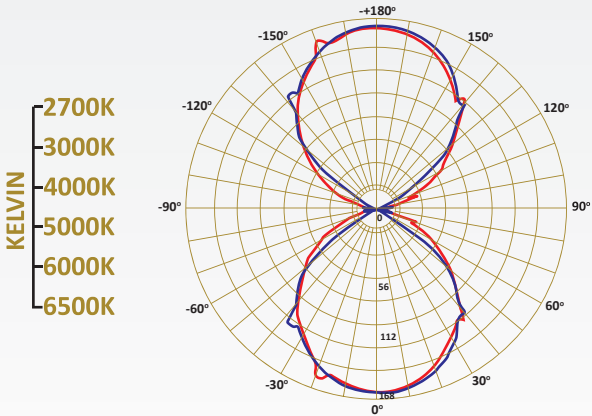
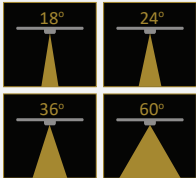
Recycling symbol

CE

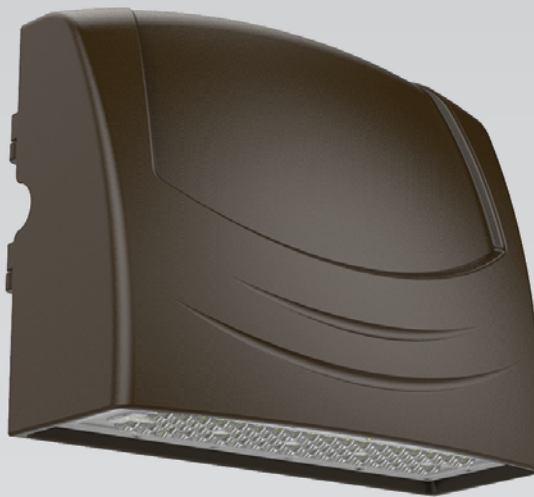
RoHS

Light Pollution Control

IK08



85~265V
50/60HZ



Wall-Surface

A wall surface light is used to be fixed on the wall. It is designed to deliver both functional and ambient lighting. Wall-mounted range of LED products can be used to replace traditional wall-mounted luminaires incorporating compact fluorescent lamps. They can be adjusted in different directions and provide versatility in lighting design. It enhances overall room brightness and creates mood lighting. It Can be installed vertically or horizontally giving you convenient control of your lighting environment. It is suitable for application as public, residential or pedestrian areas, parks, gardens and shopping malls.

HOUSING: Die Cast Aluminum in choice of RAL Colours Powder Coated

DIFFUSER: PMMA PC diffuser specially for LED

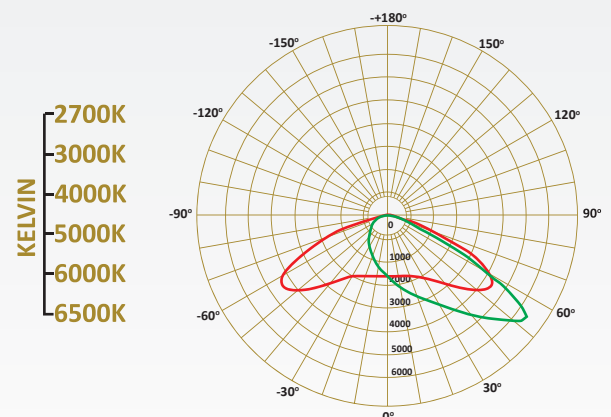
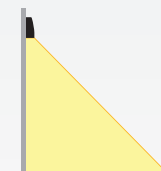
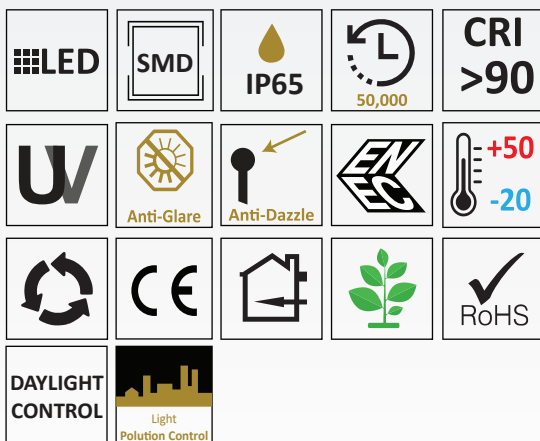
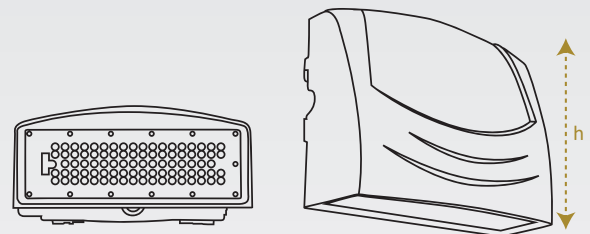
LED: Reducy Energy Consumption with L80/B10/F10

AVERAGE LIFE:50,000 hrs Lifetime Working Under Temp (-20°C - 50°C)

Technical Specifications

Item Code	Power	Lumen	Dimension
PLP205040	40W	5200lm	296x150x223h
PLT205070	70W	9100lm	296x150x223h

Technical Drawings



85~265V
50/60HZ

WALL SURFACE LIGHTS

LED DRIVER: TRIDONIC, PHILIPS, SHARP, LED CHIP: PHILIPS, CREE, OSRAM, GTI, BRIDGELUX, SAMSUNG, CITIZEN



Wall-Surface

A wall surface light is used to be fixed on the wall. It is designed to deliver both functional and ambient lighting. It has a modern design and can be used to highlight specific areas or artwork. Advanced technology and Luxurious materials ensure a long lifespan and low energy consumption. They can be adjusted in different directions and provide versatility in lighting design. This light design is thought to provide a 360 degrees light effect with a really cool look. It enhances overall room brightness and creates mood lighting. These fixtures can be found in various styles, from minimalist and modern styles to more fancy and decorative designs.

HOUSING: Die Cast Aluminum in choice of RAL Colours Powder Coated

DIFFUSER: Polycarbonate Diffuser Lens for LED 360° Reflection

REFLECTOR: Anodized Aluminum

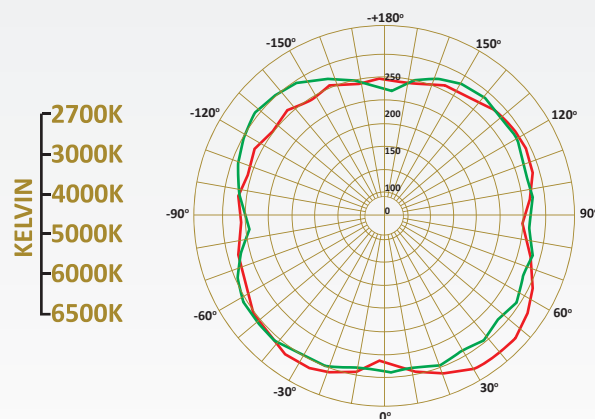
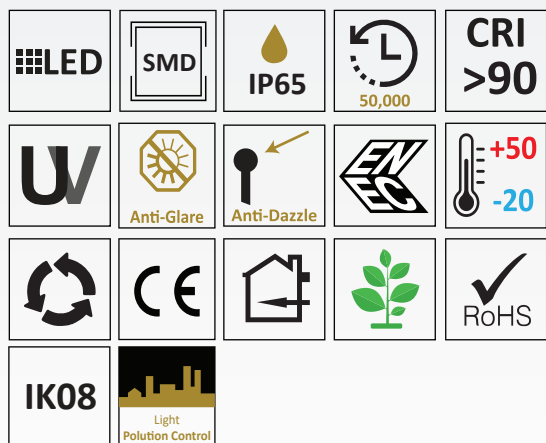
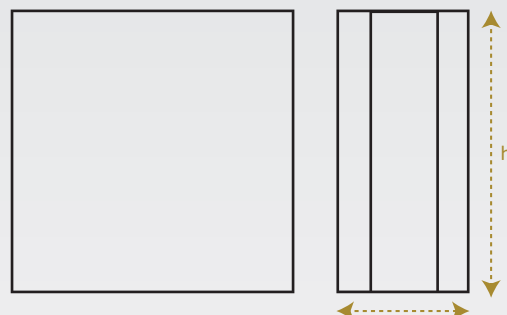
LED: Reduce Energy Consumption with L80/B10/F10

AVERAGE LIFE: 50,000 hrs Lifetime Working Under Temp (-20°C - 50°C)

Technical Specifications

Item Code	Power	Lumen	Dimension
PLR210006	6W	660lm	150x150x50h

Technical Drawings



85~265V
50/60HZ

WALL SURFACE LIGHTS

LED DRIVER: TRIDONIC, PHILIPS, SHARP, LED CHIP: PHILIPS, CREE, OSRAM, GTI, BRIDGELUX, SAMSUNG, CITIZEN



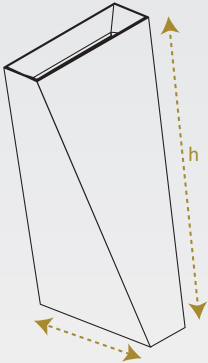
Wall-Surface

A wall surface light is used to be fixed on the wall. It is designed to deliver both functional and ambient lighting. It has a modern design and can be used to highlight specific areas or artwork. Advanced technology and Luxurious materials ensure a long lifespan and low energy consumption. They can be adjusted in different directions and provide versatility in lighting design. It enhances overall room brightness and creates mood lighting. These fixtures can be found in various styles, from minimalist and modern styles to more fancy and decorative designs. It is suitable for application as public, residential or pedestrian areas, parks, gardens and shopping malls.

- HOUSING:** Die Cast Aluminum in choice of RAL Colours Powder Coated
- DIFFUSER:** Transparent Tempered Glass Diffuser
- REFLECTOR:** Anodized Aluminum
- LED:** Reducy Energy Consumption with L80/B10/F10
- AVERAGE LIFE:**50,000 hrs Lifetime Working Under Temp (-20°C - 50°C)

Technical Specifications			
Item Code	Power	Lumen	Dimension
PLT215006	2x3W	720lm	85x85x200h
PLT215012	2x6W	1440lm	85x85x200h

Technical Drawings



LED

COB

IP65

50,000

CRI >90

W

Anti-Glare

Anti-Dazzle

EV

+50
-20

Recycling

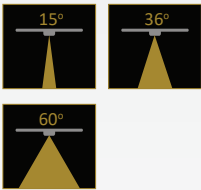
CE

RoHS

PHASE DIMMING

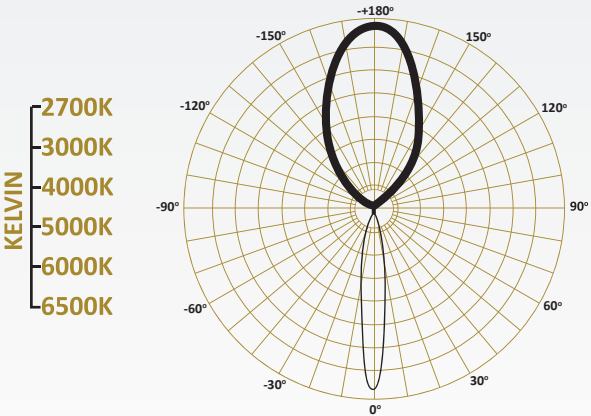
1-10 Dimming

DALI



85~265V
50/60HZ

WALL SURFACE LIGHTS



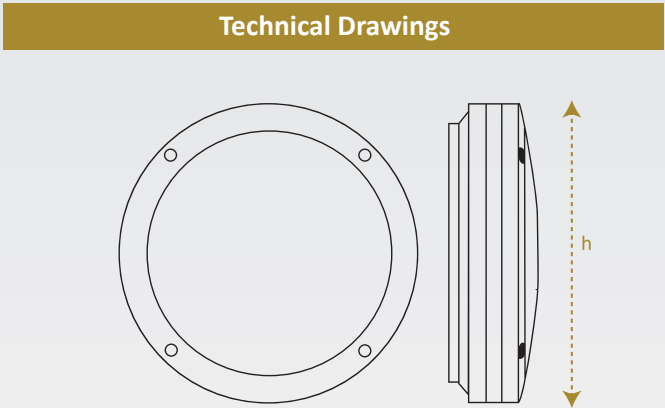


Wall-Surface

A wall surface light is used to be fixed on the wall. It is designed to deliver both functional and ambient lighting. Wall-mounted range of LED products can be used to replace traditional wall-mounted luminaires incorporating compact fluorescent lamps. They can be adjusted in different directions and provide versatility in lighting design. It enhances overall room brightness and creates mood lighting. It Can be installed vertically or horizontally giving you convenient control of your lighting environment. It is suitable for application as public, residential or pedestrian areas, parks, gardens and shopping malls.

- HOUSING:** Die Cast Aluminum in choice of RAL Colours Powder Coated
- DIFFUSER:** Polycarbonate
- REFLECTOR:** Optical PMMA lens built in LED modular
- LED:** Reducy Energy Consumption with L80/B10/F10
- AVERAGE LIFE:**50,000 hrs Lifetime Working Under Temp (-20°C - 50°C)

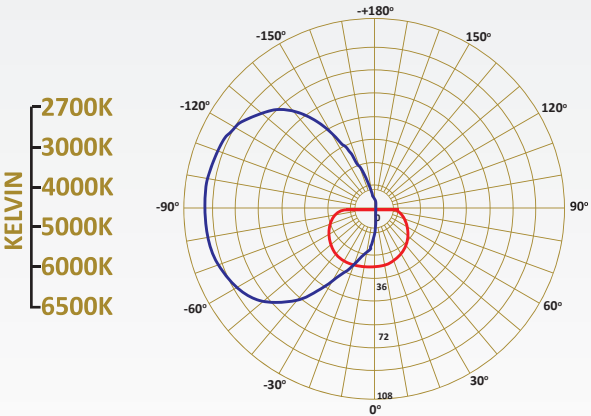
Technical Specifications			
Item Code	Power	Lumen	Dimension
PLS221018	18W	2160lm	Ø300x100h
PLS221024	24W	2700lm	Ø300x100h
PLS221032	32W	3500lm	Ø300x100h



85~265V

50/60HZ

WALL SURFACE LIGHTS



LED DRIVER

TRIDONIC

PHILIPS

SHARP

OSRAM

GTI

LED CHIP

PHILIPS

CREE

BRIDGELUX

SAMSUNG

CITIZEN



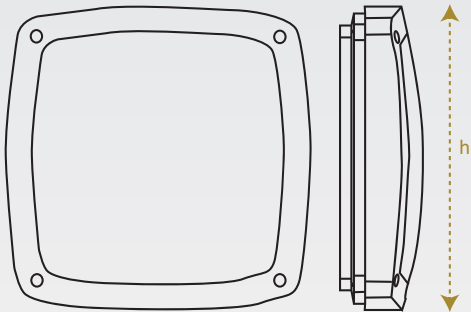
Wall-Surface

A wall surface light is used to be fixed on the wall. It is designed to deliver both functional and ambient lighting. Wall-mounted range of LED products can be used to replace traditional wall-mounted luminaires incorporating compact fluorescent lamps. They can be adjusted in different directions and provide versatility in lighting design. It enhances overall room brightness and creates mood lighting. It Can be installed vertically or horizontally giving you convenient control of your lighting environment. It is suitable for application as public, residential or pedestrian areas, parks, gardens and shopping malls.

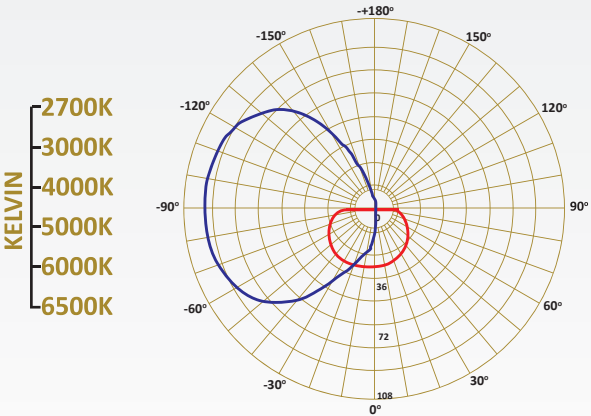
- HOUSING:** Die Cast Aluminum in choice of RAL Colours Powder Coated
- DIFFUSER:** Polycarbonate
- REFLECTOR:** Optical PMMA lens built in LED modular
- LED:** Reducy Energy Consumption with L80/B10/F10
- AVERAGE LIFE:**50,000 hrs Lifetime Working Under Temp (-20°C - 50°C)

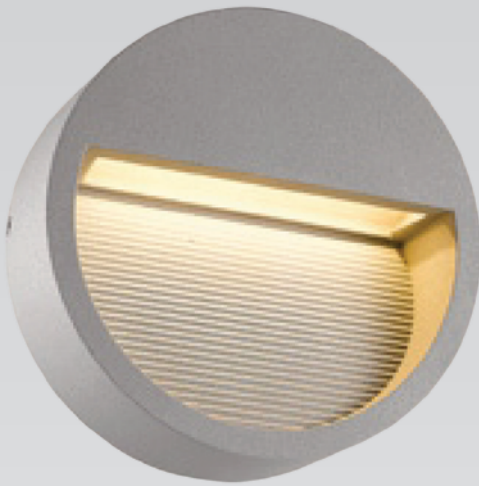
Technical Specifications			
Item Code	Power	Lumen	Dimension
PLS222018	18W	2160lm	300x300x100h
PLS222024	24W	2700lm	300x300x100h
PLS222032	32W	3500lm	300x300x100h

Technical Drawings



85~265V
50/60HZ





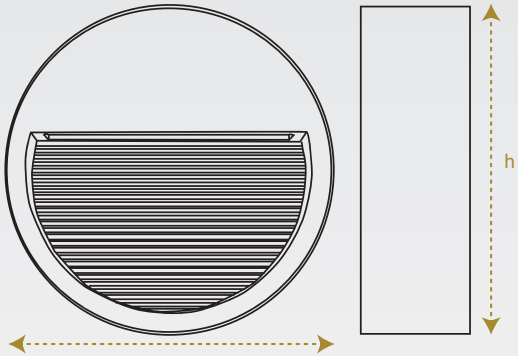
Wall-Surface

A wall surface light is used to be fixed on the wall. It is designed to deliver both functional and ambient lighting. It has a modern design and can be used to highlight specific areas or artwork. Advanced technology and Luxurious materials ensure a long lifespan and low energy consumption. They can be adjusted in different directions and provide versatility in lighting design. It enhances overall room brightness and creates mood lighting. These fixtures can be found in various styles, from minimalist and modern styles to more fancy and decorative designs.

- HOUSING:** Die Cast Aluminum in choice of RAL Colours Powder Coated
- DIFFUSER:** Tempered clear glass diffuser
- REFLECTOR:** Anodized Aluminum
- LED:** Reducy Energy Consumption with L80/B10/F10
- AVERAGE LIFE:**50,000 hrs Lifetime Working Under Temp (-20°C - 50°C)

Technical Specifications			
Item Code	Power	Lumen	Dimension
PLT206006	6W	660lm	Ø180x60h

Technical Drawings



LED

SMD

IP65

50,000

CRI >90

45°

W

Anti-Glare

Anti-Dazzle

EV

+50
-20

CE

RoHS

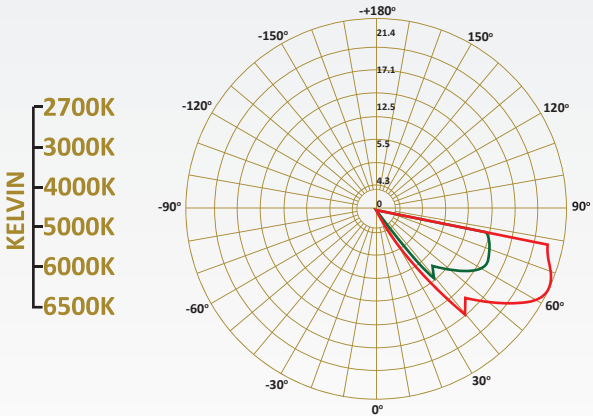
IK08

Light Pollution Control

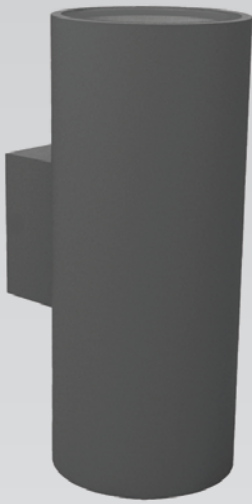


85~265V
50/60HZ

WALL SURFACE LIGHTS



- LED DRIVER
TRIDONIC
OSRAM
- PHILIPS
GTI
- SHARP
BRIDGELUX
- LED CHIP
PHILIPS
SAMSUNG
- CREE
CITIZEN



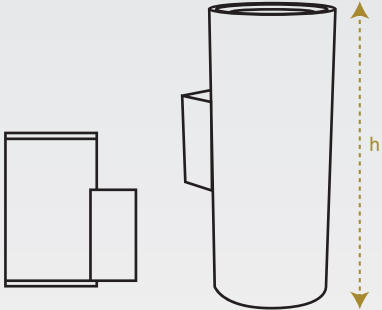
Wall-Surface

A wall surface light is used to be fixed on the wall. It is designed to deliver both functional and ambient lighting. Its compact cylindrical body made by die cast aluminum houses a recessed integrated LED source, preventing glare and hotspot issue once lit. They can be adjusted in different directions and provide versatility in lighting design. It enhances overall room brightness and creates mood lighting. It Can be installed vertically or horizontally giving you convenient control of your lighting environment. It is suitable for application as public, residential or pedestrian areas, parks, gardens and shopping malls.

- HOUSING:** Die Cast Aluminum in choice of RAL Colours Powder Coated
- DIFFUSER:** Transparent Tempered Glass Diffuser
- REFLECTOR:** Anodized Aluminum
- LED:** Reducy Energy Consumption with L80/B10/F10
- AVERAGE LIFE:**50,000 hrs Lifetime Working Under Temp (-20°C - 50°C)

Technical Specifications			
Item Code	Power	Lumen	Dimension
PLT220008	8W	960lm	90x130x150h
PLT220012	12W	1440lm	108x147x180h
PLT220016	2x8W	1920lm	90x130x200h
PLT220024	2x12W	2880lm	108x147x260h

Technical Drawings



LED

COB

IP65

50,000

CRI >90

W

Anti-Glare

Anti-Dazzle

EN

+50 -20

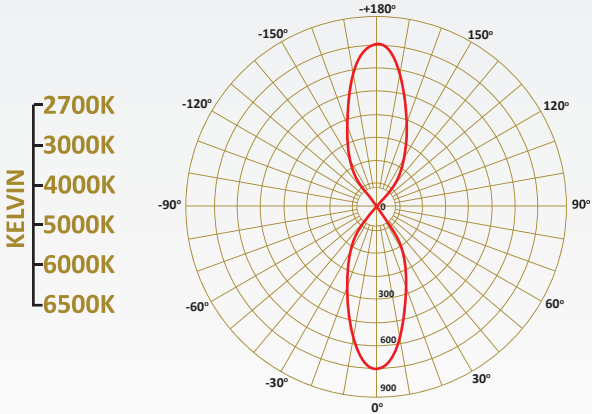
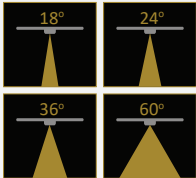
Recycle

CE

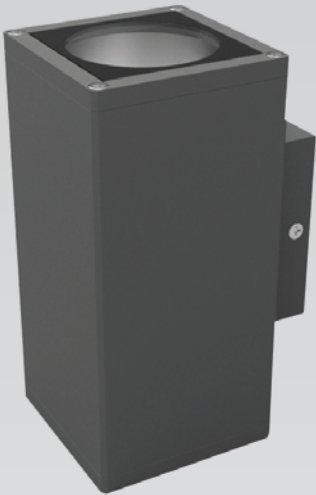
RoHS

IK08

Light Pollution Control



85~265V
50/60HZ



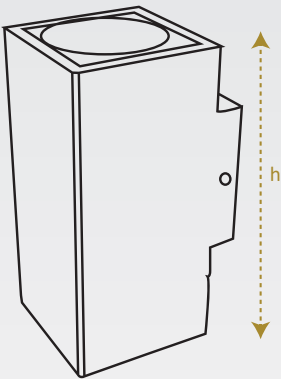
Wall-Surface

A wall surface light is used to be fixed on the wall. It is designed to deliver both functional and ambient lighting. Its compact quad cylindrical body made by die cast aluminum houses a recessed integrated LED source, preventing glare and hotspot issue once lit. They can be adjusted in different directions and provide versatility in lighting design. It enhances overall room brightness and creates mood lighting. It Can be installed vertically or horizontally giving you convenient control of your lighting environment. It is suitable for application as public, residential or pedestrian areas, parks, gardens and shopping malls.

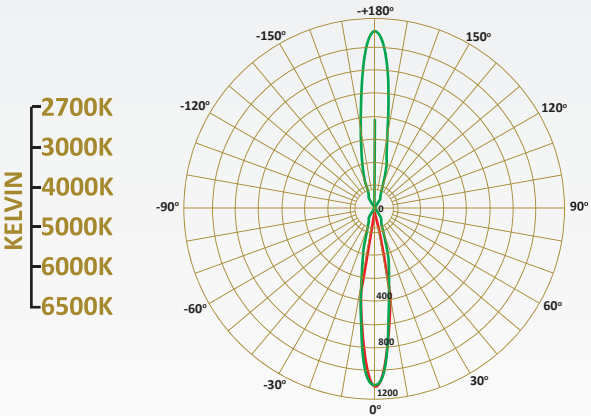
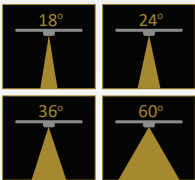
- HOUSING: Die Cast Aluminum in choice of RAL Colours Powder Coated
DIFFUSER: Transparent Tempered Glass Diffuser
REFLECTOR: Anodized Aluminum
LED: Reducy Energy Consumption with L80/B10/F10
AVERAGE LIFE:50,000 hrs Lifetime Working Under Temp (-20°C - 50°C)

Table with 4 columns: Item Code, Power, Lumen, Dimension. Rows include models PLT219008, PLT219015, PLT219016, and PLT220030 with their respective specifications.

Technical Drawings



Grid of icons representing product features: LED, COB, IP65, 50,000 hrs life, CRI >90, UV, Anti-Glare, Anti-Dazzle, Energy Efficient, Temp range +50/-20, RoHS, IK08, Light Pollution Control, and A++ energy rating.



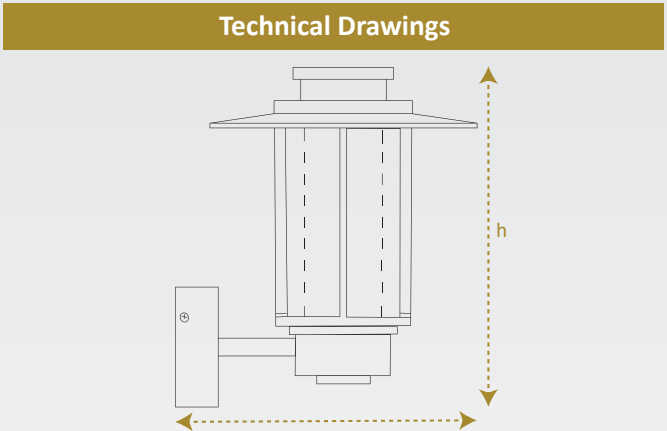


Wall-Surface

A wall surface light is used to be fixed on the wall. It is designed to deliver both functional and ambient lighting. Wall-mounted range of LED products can be used to replace traditional wall-mounted luminaires incorporating compact fluorescent lamps. They can be adjusted in different directions and provide versatility in lighting design. It enhances overall room brightness and creates mood lighting. It Can be installed vertically or horizontally giving you convenient control of your lighting environment. It is suitable for application as public, residential or pedestrian areas, parks, gardens and shopping malls.

- HOUSING:** Die Cast Aluminum in choice of RAL Colours Powder Coated
- DIFFUSER:** Double Polycarbonate PMMA Diffuser specially for LED
- LED:** Reducy Energy Consumption with L80/B10/F10
- AVERAGE LIFE:**50,000 hrs Lifetime Working Under Temp (-20°C - 50°C)

Technical Specifications			
Item Code	Power	Lumen	Dimension
PLT213008	8W	760lm	270x310h
PLT213012	12W	1140lm	270x310h
PLT213014	14W	1260lm	270x310h



LED

SMD

IP65

50,000

CRI >90

W

Anti-Glare

Anti-Dazzle

EN

+50 -20

Recycling symbol

CE

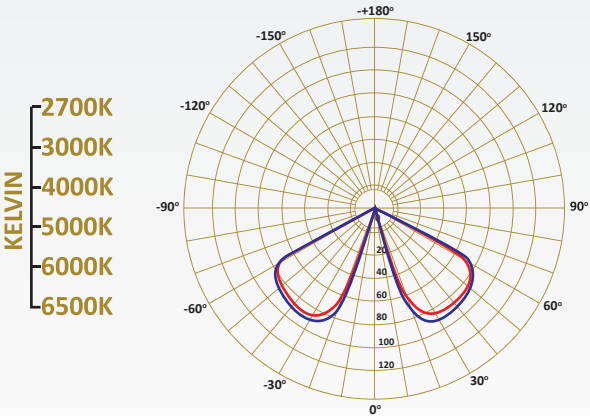
RoHS

Light Pollution Control



85~265V
50/60HZ

WALL SURFACE LIGHTS



- LED DRIVER

TRIDONIC

OSRAM

PHILIPS

SHARP

BRIDGELUX

LED CHIP

PHILIPS

SAMSUNG

CITIZEN

CREE



Metropolitan City of Rome Capital, Rome, Italy
info@polaluce.com | www.polaluce.com